

CARAN D'ACHE + MB&F
Genève

ASTROGRAPH

OWNER'S GUIDE BOOK
& INTERNATIONAL GUARANTEE

CARAN D'ACHE
Genève

MAISON DE HAUTE ÉCRITURE

Heir to over a century of precious expertise, since its creation in 1915 the Maison Caran d'Ache has cultivated the spirit of elegance and the particular care that it devotes to the art of fine writing. In harmony with the grand tradition of Swiss Manufactures, it passionately develops and crafts superlative products in Geneva that match the rigorous demands of the Swiss Made label.

CARAN D'ACHE + MB&F A UNIQUE ENCOUNTER

Sharing the same creative passion for mechanical excellence, the Maison Caran d'Ache has partnered with the youthful MB&F watchmaking company. The MB&F, Maximilian Büsser & Friends brand is synonymous with exceptional mechanical exploits, opening up a trailblazing path in Swiss Fine Watchmaking and kinetic art.

This common passion resulted in the idea of producing an exceptional piece, Astrograph, paying symbolic tribute to the spirit of exploration and to the childhood dreams at the root of technical progress.

ASTROGRAPH A CREATIVE ODYSSEY

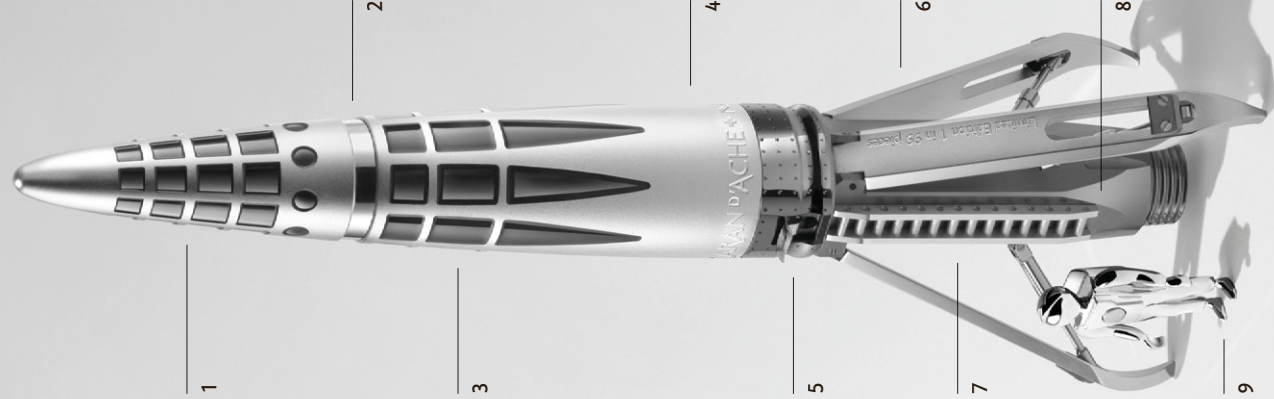
Conquering space by propelling his dreams towards it, embodied in a rocket-pen: such was the original idea behind Astrograph.

This creation was a true technical challenge, masterfully addressed by the Maison Caran d'Ache teams inspired and supported by Maximilian Büsser's innovative spirit.

With the development of Astrograph, Caran d'Ache and MB&F perfected an exceptional writing instrument featuring a complex architecture, ensuring an extremely comfortable grip, while stirring the imagination to embark on new flights of fancy.

- 1. Cockpit and storage tanks.**
- 2. Chamber.**
The cap of the rocket-pen unscrews to release the writing instrument.
- 3. Auxiliary engine reservoir.**

- 4. SAS.**
- 5. Hold and engines.**
A trigger concealed in the ring of the pen enables the symmetrical opening of the three stabiliser feet.
- 6. Stabiliser feet.**
- 7. Ladder.**
- 8. Engine.**
- 9. Astro.**
Astrograph is delivered with a magnetic astronaut that can be attached at will to the body of the rocket.





ASTROGRAPH WRITING INSTRUMENTS

The Astrograph Limited Edition is available in three versions with different finishes:

- Astrograph sandblasted matt rhodium - available in roller pen and fountain pen, limited to 99 pieces each.
- Astrograph high gloss rhodium - available in fountain pen, limited to 99 pieces.
- Astrograph anthracite ruthenium - available in fountain pen, limited to 99 pieces.

THE MATERIALS

Caran d'Ache writing instruments reflect our recognised expertise in working with different materials. Each pen produced in our Swiss workshop is carefully controlled during manufacturing. Astrograph Limited Edition gathers very special artistic crafts such as engraving, polishing and lacquering, which require exceptional precision and meticulous work.

- 1 & 3: The cockpit and auxiliary engine reservoir are either coated in rhodium or coated in ruthenium depending on the finish of your Astrograph. The chequered motif is created using an anthracite lacquer.
- 5 & 8: The engines and reactor are ruthenium-coated.
- 6: The stabiliser feet are sandblasted and covered in rhodium. The sides and edges are high gloss. The shock absorber cylinders are high gloss, while their central section is satin-brushed.
- 7: The miniature ladder features rhodium-coated sandblasted and satin-brushed sections.
- 9: The astronaut is rhodium, silver-coated.

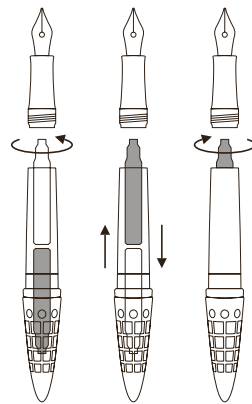


ASTROGRAPH FOUNTAIN PEN

As with each Caran d'Ache writing instrument, your Astrograph Limited Edition fountain pen is the product of our long tradition of high-quality manufacturing and creativity. It combines advanced technology with the irreplaceable expertise of skilled craftsmen.

The pen's nib is produced in 18-carat gold engraved with the hexagon, symbol of Caran d'Ache hexagonal-shaped pencil. It is polished, tested and prepared by hand, to guarantee you matchless writing comfort.

Your Astrograph fountain pen is set with a piston pump. Small ink cartridges can be used as well in replacement of the piston pump.

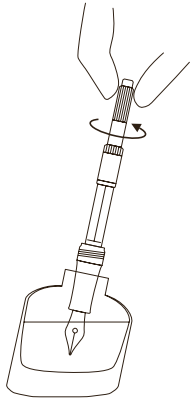


PRECAUTION DURING USE

Do not dismantle any part of the writing block. When you use your Astrograph Limited Edition fountain pen for the first time, we suggest that you write a few lines in order to start the ink flow.

USING CARTRIDGES

Your Astrograph Limited Edition fountain pen must always contain two cartridges fitted back to back as shown in the diagram. Pierce the top cartridge by screwing in the body of the pen all the way.



USING THE RESERVOIR PUMP

- Unscrew the Astrograph Limited Edition fountain pen.
- Turn the knurled section of the pump anti-clockwise till it reaches the stop.
- Immerse the whole nib into the ink bottle.
- Turn the knurled section clockwise until the reservoir is completely full.
- Make a half turn anti-clockwise to expel a few drops of ink, then clockwise again until it reaches the stop.
- Clean off any accumulated ink by placing absorbent paper on your nib.
- Screw the writing block back into the body of the pen.

CARE OF THE ASTROGRAPH WRITING BLOCK

If you do not use your Astrograph Limited Edition fountain pen for some time, the ink may dry inside the writing block.

Take out the cartridges, or the ink pump - which you empty and replace in the pen block.

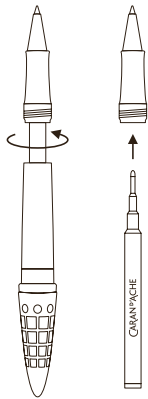
Immerse the whole Astrograph nib in a container of distilled water (never use detergents or any other cleaning materials).

Turn the knurled section clockwise until the reservoir is full, then anti-clockwise to expel the water through the writing block.

Repeat this operation until the expelled water is clear. Remove the water from the writing block by pressing absorbent paper on the split of the nib.

If you do not plan to use your Astrograph Limited Edition fountain pen for a prolonged period, do not refill it with ink after cleaning.

If any problem should arise, please contact Caran d'Ache after-sales service.



CHANGING THE ROLLER CARTRIDGE

Roller cartridges are available in blue or black ink.
Refer to the diagram to change the cartridge.



ASTROGRAPH LAUNCH PAD INSTRUMENT CASE

Adding to the fun, a case with a special design representing a launch pad has been expressly developed for the Astrograph Limited Edition.

CARING FOR YOUR ASTROGRAPH PEN

Your Astrograph Limited Edition deserves the gentle care appropriate for all precious objects.

ASTROGRAPH LEATHER POUCH

A special leather pouch has been developed to protect and carry your Astrograph pen with you at all time. Insert your Astrograph pen with the ladder facing outwards to protect your writing instrument. Leather is a living material; it can acquire a patina over time. To preserve your Astrograph pouch, avoid prolonged exposure to bright light and keep it away from all heat sources.

INTERNATIONAL GUARANTEE

Your Astrograph writing instrument has been manufactured to the highest standards and is covered by an international guarantee against all material and manufacturing defects. If any defect becomes apparent, your instrument will be repaired or exchanged for one of similar value against presentation of this certificate duly completed by Caran d'Ache, MB&F or one of their distributors. The guarantee does not cover normal and natural wear, accidental damage, damage arising from improper use or shocks, or loss. Furthermore, the guarantee does not cover ink refills, personalised decorations, or the use of components other than those recommended by Caran d'Ache. In the event of defects, dismantling or repairs carried out by persons other than authorised Caran d'Ache and MB&F personnel invalidates the guarantee.

Product

Date of purchase

Dealer's stamp





CARANDACHE.COM
MBANDF.COM

19, chemin du Foron – CH-1226 Thônex-Genève – tel. +41 22 869 01 01 – fax +41 22 869 01 35

Ref 100015.704