

**MB&F**

**HOROLOGICAL LAB**

**HOROLOGICAL MACHINE N°9 'FLOW'**



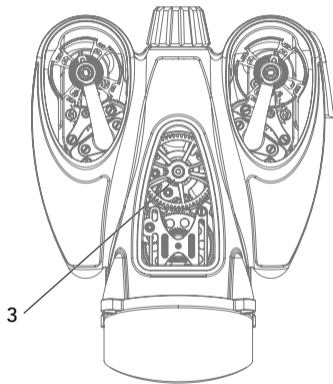
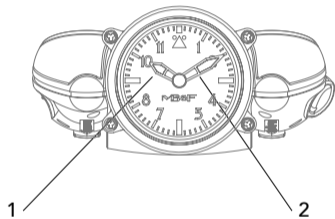
FUNCTIONS

05

OPERATING INSTRUCTIONS

07

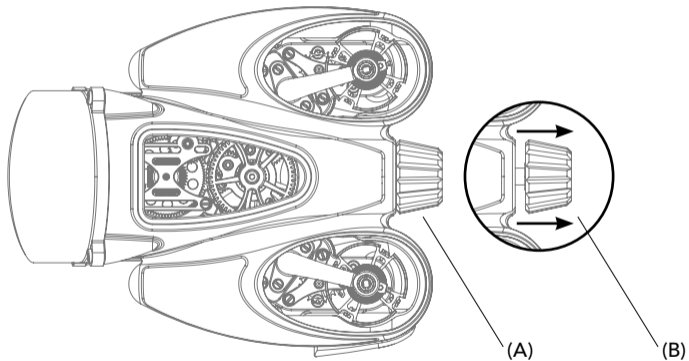
# HOROLOGICAL MACHINE N°9 'FLOW'



# FUNCTIONS

1. HOURS
2. MINUTES
3. PLANETARY DIFFERENTIAL TRANSMITTING THE AVERAGE RATE OF THE TWO REGULATORS TO THE SINGLE GEAR TRAIN

# HOROLOGICAL MACHINE N°9 'FLOW'



# OPERATING INSTRUCTIONS

## 1. WINDING

Your watch is equipped with a manual winding movement, offering approximately 45 hours of power reserve. To wind it, keep the crown in position "in" **(A)**; gently revolve the crown until you reach the maximum power reserve capacity (the crown will not turn more).

## 2. TIME SETTING

Pull crown to position "out" **(B)** and turn the crown to set the time. Push the crown back against the case when finished.

